

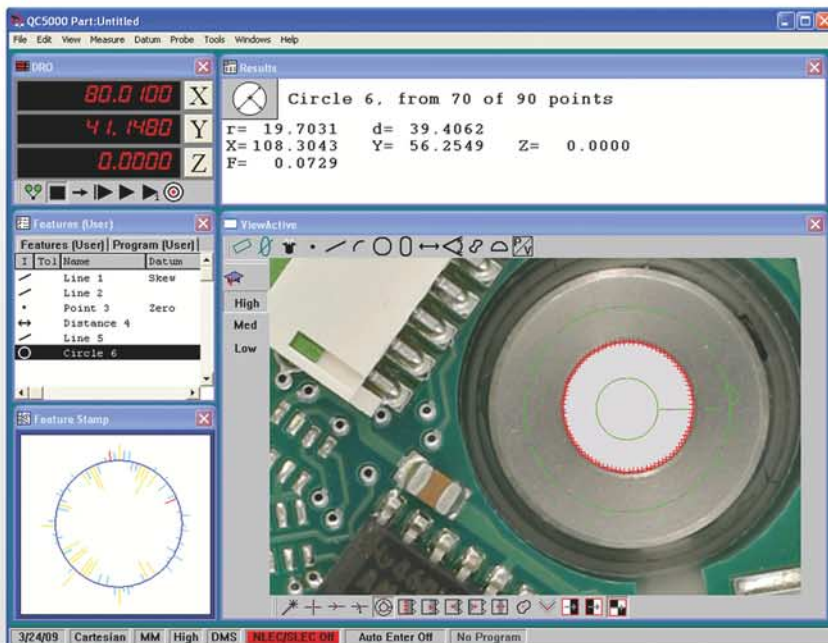


HEIDENHAIN

Software
Installation Instructions

IK 5000 QUADRA-CHEK

Software Version
3.x.x



English (en)
5/2017

Information contained in this manual

This software installation instruction covers the software installation for the IK 5000 Software v3.x.x. For further information refer to the IK 5000 Installation Instructions (ID 1035034-9x). The Installation Instructions can be downloaded from www.heidenhain.de.

Minimum system requirements

Component	w/o 3D Profiling	w/ 3D Profiling
PC	2.66 GHz dual-core Pentium	2.8 GHz quad-core Pentium
Operating System (OS)	<ul style="list-style-type: none">■ Windows Vista 32-bit■ Windows 7 32-bit, Windows 7 64-bit■ Windows 8 32-bit, Windows 8 64-bit■ Windows 10 32-bit, Windows 10 64-bit	
RAM	1GB	2GB
Available Hard Disk	500MB	1GB
PCI	1 PCI or 1 PCIe slot and 1 to 3 additional empty slots (depending on the version) Note: PCI Express slot required for PC2-COMP Express frame grabber board. The PC2-COMP Express frame grabber board is compatible with 32-bit operating systems only.	
Video Display Unit	1024 x 768 resolution	
Windows users rights for installation, setup, and update	Administrator	

Backward compatibility

The IK 5000 QUADRA-CHEK v3.x.x software version is compatible¹⁾ with several previous versions down to version 2.93.0. It can be used to update any prior version starting at version 2.93.0 and up. To update a previous version refer to "Software Updates" below.

¹⁾ Programs recorded prior to v3.0.0 may not work.

Software updates

The IK 5000 software should only be updated after consultation with the machine manufacturer. Observe the system requirements as described in "Minimum System Requirements" above. For software updating procedures, refer to "Updating the IK 5000 software" in the IK 5000 QUADRA-CHEK Addendum (ID 809541-2x).

Fonts used in these instructions

Items of **special interest** or **concepts** that are emphasized to the user are shown in bold type.

Software controls and **Windows** are shown in letter gothic bold type.

1 Setup 7

1.1 Setup 8

Installing the IK 5000 QUADRA-CHEK Software 8

Adding a Digital Camera 9

Installing the PC2-COMP Express Board Software 9

Installing the Optimet Laser Software 11

1

Setup

1.1 Setup

Installing the IK 5000 QUADRA-CHEK Software



Follow the IK 5000 Installation Instructions (ID 1035034-9x) to install the IK 5000 hardware. The Installation Instructions can be downloaded from www.heidenhain.de.

To install the software:

- ▶ Power on the system
- ▶ Insert the IK 5000 installation CD into the CD drive
- ▶ The installer program should start automatically. If not, explore the disc and double click the **autorun.exe** file that is at the root of the CD drive.
- ▶ Click the **Install IK 5000** button and follow the installation instructions

Install IK 5000



A PDF reader is required to view IK 5000 installation, operation and Help menu documentation. If a PDF reader is not already installed, follow the steps below to install Adobe Acrobat Reader.

To install Adobe Acrobat Reader:

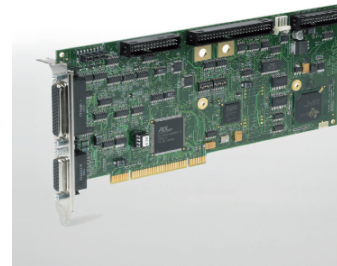
- ▶ Click the **Adobe Website** button

Adobe Website



IK 5000 INSTALL DIRECTORY

IK 5000 QUADRA-CHEK software supports industries that require precise measurement and inspection of 2D and 3D parts in single and multi-sensor environments.



IK 5000 INSTALL DIRECTORY window

HEIDENHAIN

Install Instructions

Install IK 5000

Adobe Website

VED Options

Optimet Laser

JH Website

Exit

Adding a Digital Camera

After the digital camera is mounted to the working stage and connected to the system refer to the camera manufacturer's installation documentation to complete the procedure.

Installing the PC2-COMP Express Board Software



The PC2-COMP Express board must be properly installed prior to software installation. Follow the installation instructions provided with the PC2-COMP Express to install the board in your system.



The PC2-COMP Express frame grabber board is compatible with 32-bit operating systems only.



With the PC2-COMP Express board all three components (Sapera LT, PC2-COMP Drivers and Sapera PC) must be installed and are done so in a descending order as displayed on screen.



When prompted with a choice always select the forward progression option (i.e. 'Continue', 'Next', 'Yes' or 'OK') and when prompted whether to restart the system always select 'Restart Now'.

To install the PC2-COMP Express board software:

- ▶ Power on the system
- ▶ Insert the IK 5000 installation CD into the CD drive
- ▶ The installer program should start automatically. If not, explore the disc and double click the **autorun.exe** file that is at the root of the CD drive.
- ▶ Click the **VED Options** button

VED Options

- ▶ Click the **PC2-COMP Board** button

PC2-COMP Board

- ▶ Click **Yes** if this board is installed, otherwise click **No**



PC2-COMP EXPRESS BOARD

The PC2-COMP Express frame grabber board supports using analog cameras in a Windows operating system environment to accurately measure features.



HEIDENHAIN

Install Sapera LT

PC2-COMP Drivers

Install Sapera PC

VED Options

Exit

PC2-COMP EXPRESS BOARD window

Installing Sapera LT:

- ▶ Click the **Install Sapera LT** button

Install Sapera LT

- ▶ When prompted to restart the system select **Restart Now**

Installing PC2-COMP Drivers:

- ▶ After system restart execute **autorun.exe**
- ▶ Click **PC2-COMP Board**

PC2-COMP Board

- ▶ Click the **PC2-COMP Drivers** button

PC2-COMP Drivers

- ▶ When prompted to choose the setup type select **Run-time**
- ▶ Click **Next**
- ▶ If prompted with the Windows Security dialog it is optional to check the **Always trust software from Dalsa Corp.** check box but it is required to click **Install**

Installing the Sapera PC:

- ▶ Click the **Install Sapera PC** button

Install Sapera PC

- ▶ When prompted remove all **RAINBOW** or **SAFENET** protection USB dongles from the system and click **OK**
- ▶ After installation is completed click the **VED Options** button, then the **Main Directory** button and the **Exit** button

VED Options

Main Directory

Exit



The versions of Sapera listed under the **PC2-COMP Express Board** and the **Bandit II Board** options are not the same, they are operating system specific.

Installing the Optimet Laser Software



The Optimet laser must be properly installed prior to software installation. Follow the installation instructions provided with the Optimet laser to install the laser in your system.



If the installed Optimet laser is type Mark III, then no further installation steps are needed other than configuring the laser from within the IK 5000.

To install the Optimet laser software:

- ▶ Power on the system
- ▶ Insert the IK 5000 installation CD into the CD drive
- ▶ The installer program should start automatically. If not, explore the disc and double click the **autorun.exe** file that is at the root of the CD drive.
- ▶ Click the **Optimet Laser** button

Optimet Laser

- ▶ Click the **Mark II Drivers** button

Mark II Drivers

- ▶ When prompted to restart the system select **Restart Now**
- ▶ Click the **Mark II Files** button

Mark II Files

- ▶ After installation is completed click the **Exit** button

Exit



OPTIMET LASER INSTALL

IK 5000 software integrates laser measuring capabilities to bring you an easy way to acquire large number of data points in a fast and accurate way. With Optimet Laser, you can leverage the Power of QUADRA-CHEK to probe curvy surfaces efficiently.



OPTIMET LASER INSTALL window

HEIDENHAIN

Read Manual

Mark II Drivers

Mark II Files

Main Directory

Exit

D
Digital Camera, adding 9

I
IK 5000 QUADRA-CHEK Software 8

O
Optimet Laser 11

P
PC2-COMP Express Board 9

S
System requirements 3

HEIDENHAIN

DR. JOHANNES HEIDENHAIN GmbH

Dr.-Johannes-Heidenhain-Straße 5

83301 Traunreut, Germany

☎ +49 (86 69) 31-0

[FAX] +49 (86 69) 50 61

e-mail: info@heidenhain.de

Technical support [FAX] +49 (86 69) 31-10 00

e-mail: service@heidenhain.de

Measuring systems ☎ +49 (86 69) 31-31 04

e-mail: service.ms-support@heidenhain.de

TNC support ☎ +49 (86 69) 31-31 01

e-mail: service.nc-support@heidenhain.de

NC programming ☎ +49 (86 69) 31-31 03

e-mail: service.nc-pgm@heidenhain.de

PLC programming ☎ +49 (86 69) 31-31 02

e-mail: service.plc@heidenhain.de

Lathe controls ☎ +49 (7 11) 95 28 03-0

e-mail: service.hsf@heidenhain.de

www.heidenhain.de