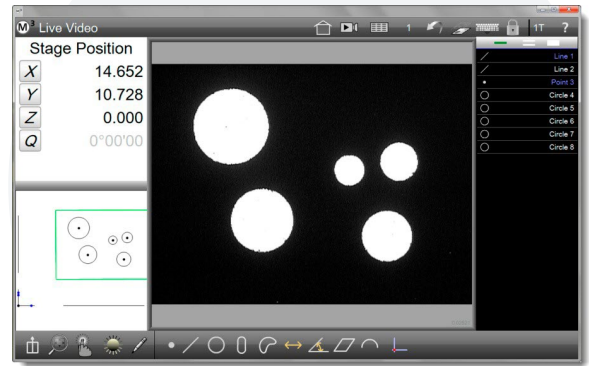


M3 Software Installation



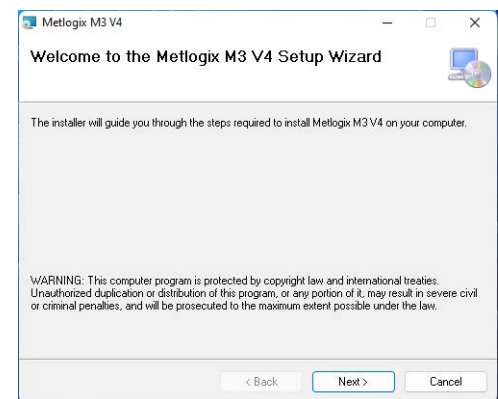
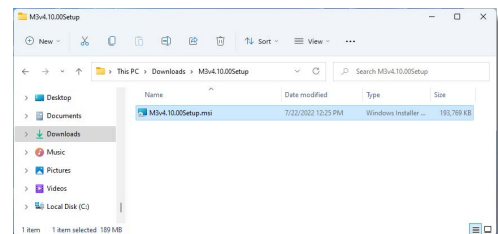
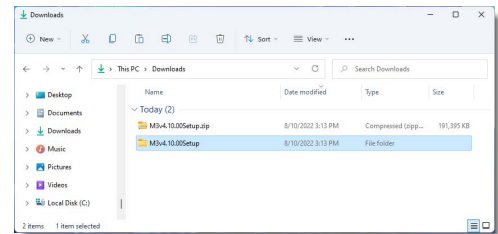
Operating System and PC

NOTE: The MetLogix M3 software should only be installed on computer systems running the Microsoft® Windows® Operating Systems (64 bit).

Target systems for the M-Series software packages should be approved for use by a MetLogix OEM. Please contact your MetLogix provider to validate PC specifications for the chosen PC model if it is being used for the first time.

Install from File

- ✓ Locate the setup executable file for the M3 software you intend to install.
- ✓ Double click the Setup executable to launch the installation utility.
- ✓ Follow the installation screen instructions to install the software on your PC system.
- ✓ A shortcut to launch your M3 software will be added to your desktop.



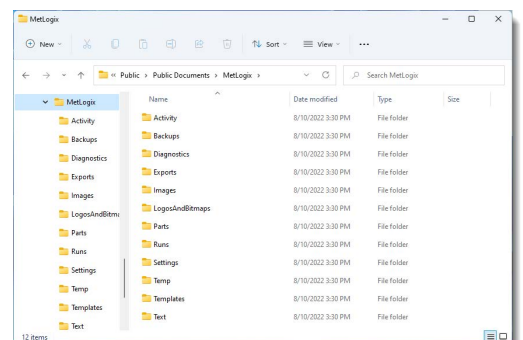
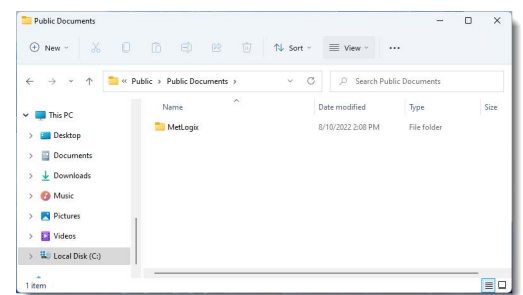
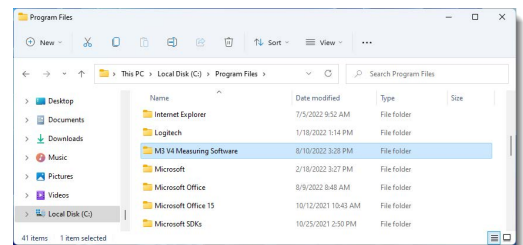
The MetLogix Installation Folder

By default, the M3 software is installed in either *Programs Files* or *Program Files (x86)* system directory, depending on the version you are installing. The files in this folder are critical to the functionality of your M3 software. Files in this folder should not be removed nor other files added in.

MetLogix Files Output Folder

After the first launch of the M3 software, a folder named *MetLogix* will be created at the following path: *(Drive Letter):\Users\Public\Public Documents*. This folder contains the following sub-folders:

- ✓ Activity: May contain files tracing M3 session activities.
- ✓ Backups: Contains backup settings and calibration files.
- ✓ Diagnostics: May contain diagnostic files.
- ✓ Exports: Contains files from export activities.
- ✓ Images: Contains images generated by the image archive function.
- ✓ LogosAndBitmaps: May contain company logos/images
- ✓ Parts: Contains saved part program files.
- ✓ Runs: Contains part program run files.
- ✓ Settings: Contain the core settings, configuration and calibration files of your M3 software.
- ✓ Temp: Contains temporary operations files.
- ✓ Templates: Contains user generated templates.
- ✓ Text: May contains any language translation files.



Help and Resources

Please visit the support section at www.metlogix.com for access to MetLogix product documentation.

Watch tutorial videos for popular Mx functions at <http://www.youtube.com/metlogix>

Join the discussion on Facebook, search "MetLogix".

Contacts

175 Canal Street, Suite 503, Manchester, NH 03101. USA

Tel: 603.836.4452

Fax: 603.369.6499

Email: support@metlogix.com

Web: www.metlogix.com